

---

**MADEMOISELLE  
COLLECTION  
CHANEL**

USER GUIDE  
ENGLISH

---

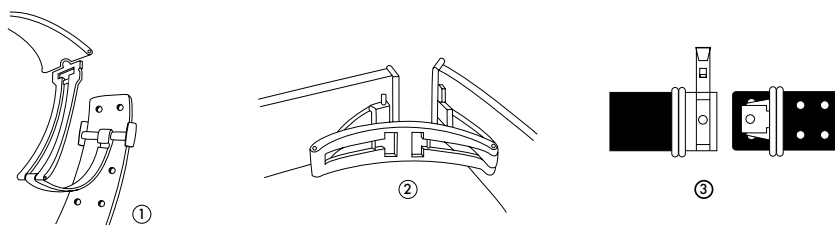
### ADJUSTING THE TIME

Crown C is normally placed in position 1.  
Pull the crown out one notch (position 2), turn to move the hands to the desired time.  
Remember to push the crown back fully to return it to its original position.

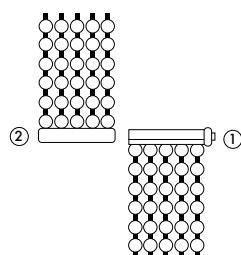


A - Hours hand  
B - Minutes hand  
C - Crown

### HANDLING OF THE CLASPS



1. Double deployant buckle. Adjust size by moving the buckle along the clasp.
2. Triple automatic deployant buckle.
3. Noches for size adjustment. Adjust size by moving the buckle along the clasp.



#### Opening:

- Release the safety pin by unscrewing the knob a quarter turn ①
- Pull apart the two sides of the clasp ②

#### Closing:

- Reverse steps above